

# CD1E V.3

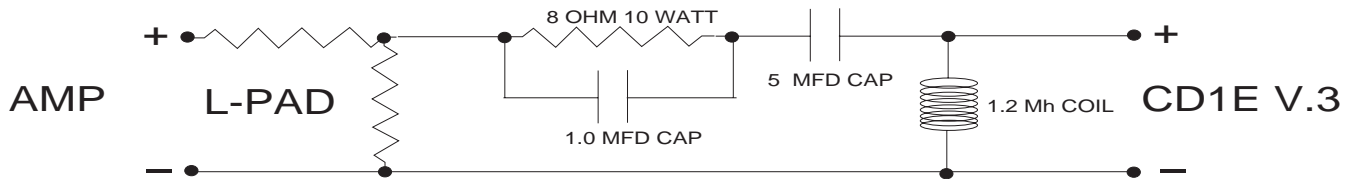
## CONTROLLED DISPERSION LOUDSPEAKER

### Special application notes:

1- The CD1E V.3 **must** be used with a high pass crossover filter. The recommended lowest crossover frequency is 1500 Hz. Either a passive or active crossover may be utilized with a minimum slope of 12 dB per octave. With a passive crossover use only the passive crossovers supplied on this sheet with a **high quality mono 50 watt l-pad for attenuation.**

2- Maximum amplifier power after any passive attenuation or with active crossover systems is 40 watts continuous power with no amplifier clipping. Clipping of the amplifier output or input stages will cause failure of the voice coil which is not covered under warranty. Audible distortion is a clear indication of amplifier clipping, when distortion is heard the volume should be reduced immediately.

### 1800 HZ 12 DB HIGH PASS FOR CD1E V.3



### 1500 HZ 24DB HIGH PASS FOR CD1E v.2

